



Our goal is to exceed the expectations of every Client, by offering outstanding services, increased flexibility, and greater value, thus optimizing system functionality and improving operational efficiency.

Company Profile

2024



Khula KL Development Services (Khula), is a 100% BEE company, a place for Professional Development, we are a network of passionate, supportive, collaborative, diverse and professional consultants, facilitators, assessors and moderators; who focus on developing the skills of company employees to improve team performance.

Our goal is to exceed the expectations of every client by offering outstanding services, increased flexibility, and greater value, thus optimizing system functionality and improving operational efficiency.

OUR VISION

At Khula KL Development Services (Pty) Ltd, we are dedicated to provide the highest quality Training Solutions and Consulting Services to our clients.

OUR MISSION

The Khula KL Development Services (Pty) Ltd mission is to provide World-Class customer satisfaction in Training and Consulting Services marketplace; while maintaining commitment to the highest standards of ethical behaviour, and professional integrity.

Khula KL Development Services (Pty) Ltd accomplishes this by combining quality products and proven technologies with certified Education and Training professionals and industry experts, providing unsurpassed service and support to our clients.

THE KHULA APPROACH

We first do a needs analysis using our competency tools which helps to conduct appropriate research and come up with working solutions with each identified need, develop client-centred tailor-made training material, present solution-driven high impact training, conduct training evaluation to monitor impact, provide additional support where need be and then certify candidates.



Why Choose us:

- **Expertise**

The Directors, Facilitators, Assessors and Moderators employed by Khula have many years of experience in skills development training. Clients can trust that Khula's courses teach real skills with measurable results.

- **ROI for Employers**

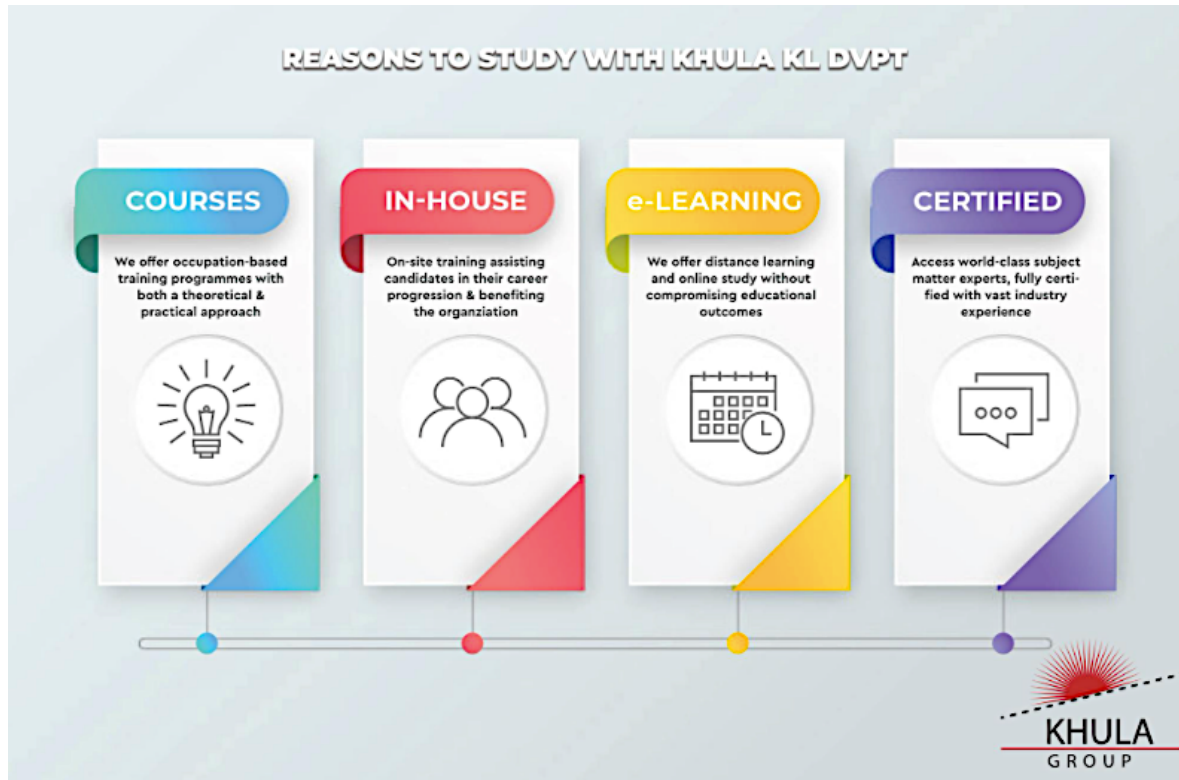
Our training approach ensures that knowledge and skills acquired is applied in the workplace, adding value and making a difference to productivity in the workplace.

- **Accredited Training Programs**

Khula is accredited as a Provider of Education and Training. We have been audited on our quality process and surpassed all the industry requirements with regard to our methodology, trainer qualifications, assessing and moderating, as well as compliance to QMS.

- **B-BBEE**

Khula prides itself on having been awarded with the B-BBEE verification status of LEVEL 1 contributor with a 135% BEE Recognition Level.



What makes us unique?

Measurable results

- We are able to do assessments before and after training, that way we can measure what the learner has gained from the training, and ensure they use their newly gained knowledge in the workplace.

Course Training Reports

- The post course training report covers the Facilitators Observation and feedback, the report also lists recommendations to help our clients achieve their goals following training and assisting with long-term change in the workplace.



Flexible Learning

- Online and Classroom Learning

Easy and Fun

- We provide fun and quality education with excellence to build our learners futures. Our online learning is fun and easy to use. Learners get to interact with each other and have classroom experience.



TRAINING MENU

All our courses are accredited by the Transport Education and Training Authority, and Services SETA.

Khula Development Services Offering

Supply Chain Management , Transport and Logistics - TETA

| Code | Course Name | Duration | NQF Level | Credits | Accreditation |
|---------|---|----------|-----------|---------|---------------|
| NC:SCM | National Certificate: Supply Chain Management | 1 Year | Level 5 | 150 | 74149 |
| NC:SSCM | National Certificate: Strategic Supply Chain Management | 1 year | Level 5 | 153 | 74149a |
| NC:PPSC | National Certificate: Purchasing/Procurement and Supply Chain | 1 year | Level 5 | 151 | 74149b |
| NC:LM | National Certificate: Materials/Logistics Management | 1 year | Level 5 | 152 | 74149c |
| NC:PSS | National Certificate: Public Sector Supply Chain | 1 year | Level 5 | 182 | 74149d |
| TF: FH | National Certificate: Freight Handling | 1 year | Level 3 | 128 | 57831 |

Construction Qualifications - CETA

| | | | | | |
|---------|---|--------|---------|-----|-------|
| TF: CRW | National Certificate: Construction Road Works | 1 year | Level 3 | 155 | 24173 |
| TF:BCC | National Certificate: Building and Civil Construction | 1 year | Level 3 | 140 | 65409 |

Business Administration Qualifications – SERVICES SETA

| | | | | | |
|---------|---|--------|---------|-----|-------|
| TF: CCS | National Certificate: Contact Centre Support LP73269 | 1 year | Level 2 | 128 | 71490 |
| TF:BA | Further Education and Training Certificate Business Administration Services LP35928 | 1 year | Level 4 | 140 | 61595 |
| TF:GM | National Certificate: Generic Management LP60269 | 1 year | Level 5 | 162 | 59201 |
| TF:LRP | National Certificate: Labour Relations Practice LP48641 | 1 year | Level 5 | 121 | 93993 |

| | | | | | |
|--|---|--------|---------|-----|-------|
| TF:GETH | National Certificate: (GETC) General Education and Training: Hygiene and Cleaning | 1 year | Level 1 | 120 | 57937 |
| Manufacturing and Engineering – MERSETA | | | | | |
| TF:PT | National Certificate: Production Technology | 1 year | Level 3 | 120 | 58785 |
| TF:PT2 | Further Education and Training Certificate: Production Technology | 1 year | Level 4 | 143 | 58779 |
| Information Technology – MICT SETA | | | | | |
| TF:EUC | National Certificate: Information Technology End User Computing LP 49077 | 1 year | Level 3 | 130 | 61591 |
| TF:TS | Further Education and Training Certificate: Technical Support | 1 year | Level 4 | 165 | 78964 |
| TF:SS | National Certificate: Information Technology Systems Support | 1 year | Level 5 | 160 | 48573 |
| Wholesale and Retail | | | | | |
| TF:WRO | National Certificate: Wholesale and Retail Operations | 1 year | Level 3 | 120 | 63409 |
| Hospitality - CATHSSETA | | | | | |
| TF:HR | Further Education and Training Certificate: Hospitality Reception LP59790 | 1 year | Level 4 | 126 | 64469 |
| TF:PC | National Certificate: Professional Cookery | 1 year | Level 4 | 145 | 14111 |
| TF:FFS | National Certificate: Fast Food Services | 1 year | Level 3 | 138 | 14115 |
| Agriculture - AGRISSETA | | | | | |
| TF:PP | National Certificate: Plant Production | 1 year | Level 2 | 120 | 48975 |
| EDUCATION, TRAINING AND DEVELOPMENT – ETDP SETA | | | | | |
| TF:ECD | Further Education and Training Certificate: Early Childhood Development | 1 year | Level 4 | 140 | 58761 |

New Venture Creations

| | | | | | |
|---------|--|--------|---------|-----|-------|
| FET: NV | Further Education and Training Certificate: New Venture Creation | 1 year | Level 4 | 149 | 66249 |
|---------|--|--------|---------|-----|-------|

Short Courses - Supply Chain

| | | | | | |
|------|--|------------------|---------|----|--------|
| SC1 | Monitor, assess and manage risk | 2 months for POE | Level 5 | 8 | 252025 |
| SC2 | Management practices within the supply chain | 2 months for POE | Level 5 | 10 | 336702 |
| SC3 | Establish a competitive supply chain infrastructure | 2 months for POE | Level 5 | 10 | 336706 |
| SC4 | Facilitate processes to ensure the integration of supply chain information | 2 months for POE | Level 5 | 8 | 336708 |
| SC5 | Develop and implement supply chain performance management systems | 2 months for POE | Level 5 | 10 | 336710 |
| SC6 | Demonstrate an understanding of the key elements in developing strategies to optimise operational supply | 2 months for POE | Level 6 | 8 | 336711 |
| SC7 | Outline the philosophy of Supply Chain Management | 2 months for POE | Level 6 | 6 | 336712 |
| SC8 | Manage relationships between supply chain partners | 2 months for POE | Level 5 | 10 | 336719 |
| SC9 | Manage logistics operations | 2 months for POE | Level 4 | 12 | 113835 |
| SC10 | Manage the return of goods | 2 months for POE | Level 6 | 2 | 123192 |
| SC11 | Describe and apply the management of stock and fixed assets in a business unit | 2 months for POE | Level 4 | 2 | 13945 |
| SC12 | Control and order stock | 2 months for POE | level 4 | 4 | 246750 |
| SC13 | Select and develop service providers for a forwarding operation | 2 months for POE | Level 5 | 8 | 252260 |
| SC14 | Align logistics activities to achieve competitive advantage | 2 months for POE | Level 5 | 15 | 252288 |

| | | | | | |
|------|--|------------------|---------|----|--------|
| SC15 | Formulate risk management policies and procedures for international trading companies | 2 months for POE | Level 5 | 8 | 252294 |
| SC16 | Conduct initial assessment for strategic sourcing | 2 months for POE | Level 6 | 4 | 260077 |
| SC17 | Develop a sourcing strategy | 2 months for POE | Level 6 | 8 | 260097 |
| SC18 | Execute a strategic sourcing strategy | 2 months | Level 6 | 6 | 260137 |
| SC19 | Adhere to professional conduct and business ethics | 2 months for POE | Level 4 | 4 | 335835 |
| SC20 | Manage in and out sourcing | 2 months for POE | Level 5 | 4 | 336679 |
| SC21 | Create sustainable value through appropriate cost and pricing strategies | 2 months for POE | Level 6 | 10 | 336680 |
| SC22 | Process customer orders | 2 months for POE | Level 5 | 5 | 336681 |
| SC23 | Demonstrate an understanding of the principles of marketing | 2 months for POE | Level 5 | 5 | 336699 |
| SC24 | Lead and influence the supply chain management environment | 2 months for POE | Level 6 | 13 | 336700 |
| SC25 | Demonstrate an understanding of the fundamental principles of the economy | 2 months for POE | Level 5 | 8 | 336701 |
| SC26 | Design a distribution network | 2 months for POE | Level 6 | 5 | 336703 |
| SC27 | Prepare products for transportation; manage the return of goods and warehousing | 2 months for POE | Level 5 | 10 | 336704 |
| SC28 | Demonstrate an understanding of the fundamentals of international trade and execute international purchases | 2 months for POE | Level 6 | 5 | 336705 |
| SC29 | Demonstrate an understanding of the key issues important for compliance with corporate governance principles and social responsibility | 2 months for POE | Level 5 | 6 | 336707 |
| SC30 | Conduct demand forecasting and develop supply and capacity plans to meet demand | 2 months for POE | Level 6 | 8 | 336720 |

| | | | | | |
|------------------------------|---|------------------|---------|----|--------|
| SC31 | Demonstrate an understanding of the key concepts and elements of strategic supply chain management | 2 months for POE | Level 6 | 13 | 336739 |
| SC32 | Analyse logistics systems and implement appropriate strategic plans | 2 months for POE | Level 6 | 8 | 336740 |
| SC33 | Schedule production activities | 2 months for POE | Level 5 | 5 | 336741 |
| SC34 | Develop and implement optimal inventory strategies | 2 months for POE | Level 6 | 8 | 336742 |
| SC35 | Negotiate with suppliers | 2 months for POE | Level 5 | 12 | 252267 |
| SC36 | Apply professional values and ethics in the operational environment | 2 months for POE | Level 5 | 4 | 335800 |
| SC37 | Evaluate the influences of key components in a supply chain | 2 months for POE | Level 5 | 8 | 336709 |
| SC38 | Demonstrate an understanding of the supply chain environment | 2 months for POE | Level 5 | 8 | 336713 |
| SC39 | Explain the role of transport logistics | 2 months for POE | Level 1 | 2 | 252249 |
| Public Sector Courses | | | | | |
| PS1 | Participate in the design and implementation of municipal supply chain management | 2 months for POE | Level 6 | 12 | 116353 |
| PS2 | Demonstrate and apply knowledge of the ethical standards in the Public Sector | 2 months for POE | Level 4 | 4 | 242857 |
| PS3 | Apply the principles and theories of public sector project management | 2 months for POE | Level 6 | 12 | 242914 |
| PS4 | Apply principles, regulations and legislation underlying supply chain management in the public sector | 2 months for POE | Level 5 | 15 | 119345 |
| PS5 | Demonstrate knowledge and insight into a bid committee system applicable to an Organ of State in South Africa | 2 months for POE | Level 5 | 15 | 337061 |

| | | | | | |
|-------------------------------|--|------------------|---------|----|--------|
| PS6 | Administer contracts for goods, works and services in the public sector | 2 months for POE | Level 5 | 5 | 377896 |
| PS7 | Perform acquisition management activities for public sector supply chain management. | 2 months for POE | Level 5 | 11 | 377898 |
| PS8 | Perform demand management activities for public sector supply chain management | 2 months for POE | Level 5 | 7 | 377901 |
| PS9 | Motivate and Build a Team | 2 months for POE | Level 4 | 10 | 242819 |
| Warehouse and Stock | | | | | |
| WS1 | Count stock for a stock-take | 2 months for POE | Level 2 | 7 | 114891 |
| WS2 | Move, pack and maintain stock in a distribution centre/warehouse | 2 months for POE | Level 2 | 12 | 117898 |
| WS3 | Pick stock in a distribution centre/warehouse | 2 months for POE | Level 2 | 12 | 117899 |
| Freight management | | | | | |
| FM1 | Demonstrate knowledge and understanding of the legal framework of freight forwarding | 2 months for POE | Level 5 | 7 | 252291 |
| FM2 | Secure and retain new business in the freight forwarding industry | 2 months for POE | Level 5 | 8 | 252296 |
| FM3 | Prepare freight for storage | 2 months for POE | Level 1 | 2 | 252264 |
| FM4 | Prepare freight for transportation | 2 months for POE | Level 1 | 4 | 252261 |
| FM5 | Apply a knowledge and understanding of International Trade Documentation | 2 months for POE | Level 2 | 7 | 11409 |
| FM6 | Display an understanding of the International Trading Environment | 2 months for POE | Level 2 | 7 | 11407 |
| Business Communication | | | | | |
| BC1 | Writing and Presentation | 2 months for POE | Level 4 | 5 | 119459 |

| | | | | | |
|-------------------------------|---|------------------|---------|---|--------|
| BC2 | Use language and communication in occupational learning programmes | 2 months for POE | Level 4 | 5 | 119471 |
| BC3 | Interpret and use information from texts | 2 months for POE | Level 3 | 5 | 119457 |
| BC4 | Read/view, analyse and respond to a variety of texts | 2 months for POE | Level 4 | 5 | 119469 |
| BC5 | Accommodate audience and context needs in oral/signed communication | 2 months for POE | Level 3 | 5 | 119472 |
| BC6 | Utilise layout signs and signal communications in the transport industry | 2 months for POE | Level 1 | 4 | 252255 |
| BC7 | Engage in a range of speaking/signing and listening interactions for a variety of purposes | 2 months for POE | Level 1 | 6 | 119635 |
| BC8 | Explore and use a variety of strategies to learn | 2 months for POE | Level 1 | 5 | 119631 |
| BC9 | Read/view and respond to a range of text types | 2 months for POE | Level 1 | 6 | 119640 |
| BC10 | Write/Sign for a variety of different purposes | 2 months for POE | Level 1 | 6 | 119636 |
| Maths and Calculations | | | | | |
| MC1 | Apply knowledge of statistics and probability to critically interrogate and effectively communicate findings on life related problems | 2 months for POE | Level 4 | 6 | 9015 |
| MC2 | Represent analyse and calculate shape and motion in 2-and 3-dimensional space in different contexts | 2 months for POE | Level 4 | 4 | 9016 |
| MC3 | Use mathematics to investigate and monitor the financial aspects of personal, business, national and international issues | 2 months for POE | Level 4 | 6 | 7468 |
| MC4 | Describe and represent objects in terms of shape, space and measurement | 2 months for POE | Level 1 | 5 | 119373 |

| | | | | | |
|---|--|------------------|---------|----|--------|
| MC5 | Describe, interpret and represent mathematical patterns, functions and algebra in different contexts | 2 months for POE | Level 1 | 6 | 119368 |
| MC6 | Evaluate and solve data handling and probability problems within given contexts | 2 months for POE | Level 1 | 5 | 119364 |
| MC7 | Work with numbers; operations with numbers and relationships between numbers | 2 months for POE | Level 1 | 4 | 119362 |
| Basic Computer Skills | | | | | |
| CMS1 | Apply basic computer technology | 1 month for POE | Level 3 | 11 | 113836 |
| CMS1 | Managing files in a Graphical User Interface (GUI) environment | 2 months for POE | Level 1 | 3 | 117867 |
| CMS2 | Operate a personal computer system | 2 months for POE | Level 1 | 3 | 116932 |
| CMS3 | Use generic functions in a Graphical User Interface (GUI)-environment | 2 months for POE | Level 1 | 4 | 117902 |
| Health and Safety in Transport Environment | | | | | |
| HS1 | Understand chemical dependency and apply personal health care | 2 months for POE | Level 1 | 3 | 110254 |
| HS2 | Explain occupational health and safety within the transport industry | 2 months for POE | Level 2 | 6 | 252279 |
| Customer service | | | | | |
| CS1 | Foster and maintain customer relations | 2 months for POE | Level 3 | 10 | 123258 |
| CS2 | Describe the impact of customer service on a business | 2 months for POE | Level 1 | 6 | 252244 |

TESTIMONIALS

"Can't believe how much I have learnt in such a short time. Lessons were well presented and I really enjoyed the project management course"

Thandazani Vunungwi; Warehouse Supervisor

"I have never done online learning before, I was anxious at first but managed to pass all my courses. Looking forward to the next level"

Diana Mondli; Student

"Working with Khula was eye-opening for my team, the Transport Management course was very helpful in improving our operations"

Thabang Pokotje, SAAT Manager



Khula KL Development Services Pty Ltd
Eastgate Office Park
Johannesburg, 2198
Tel: 0875100330 or 0837704620

Email: hello@khulagroup.co.za
www.khulagroup.co.za <<http://www.khulagroup.co.za>>
Linkedin: <https://www.linkedin.com/company/>
Facebook: <https://web.facebook.com/KhulaSkills>

Your Trusted Skills Training Partner

We look forward to hearing from you!